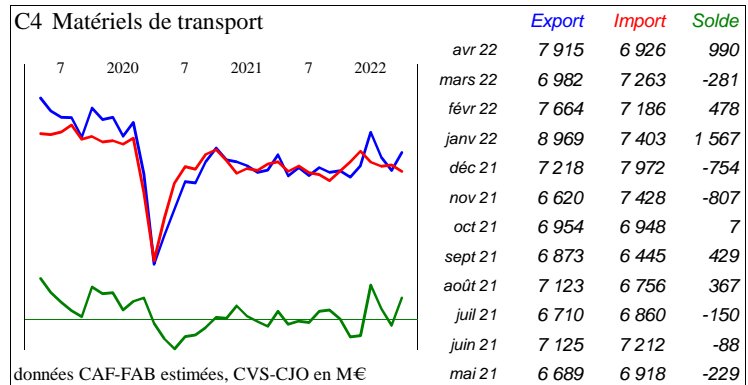
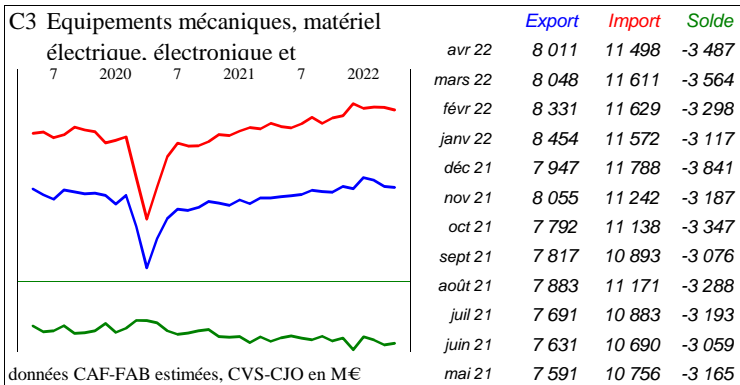
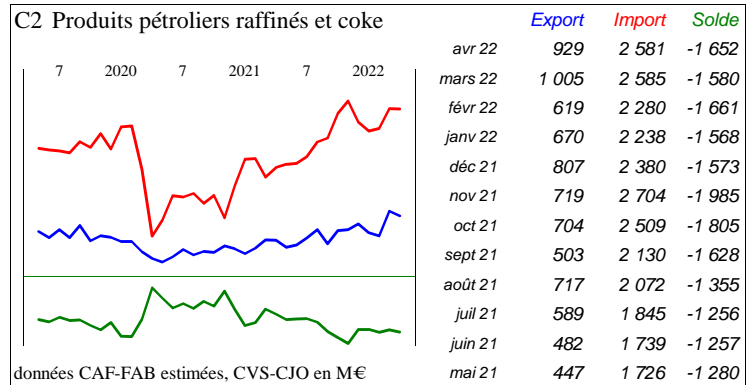
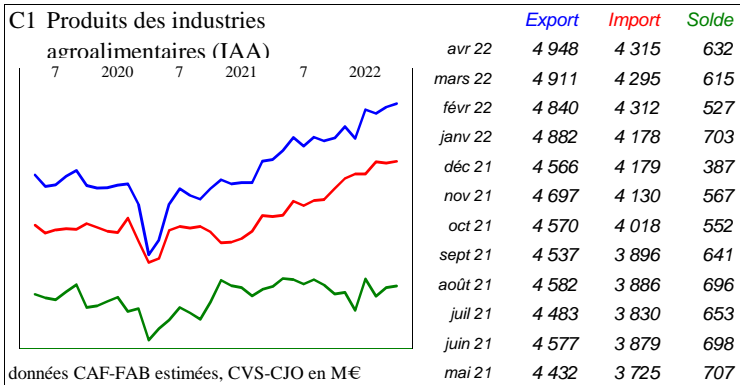
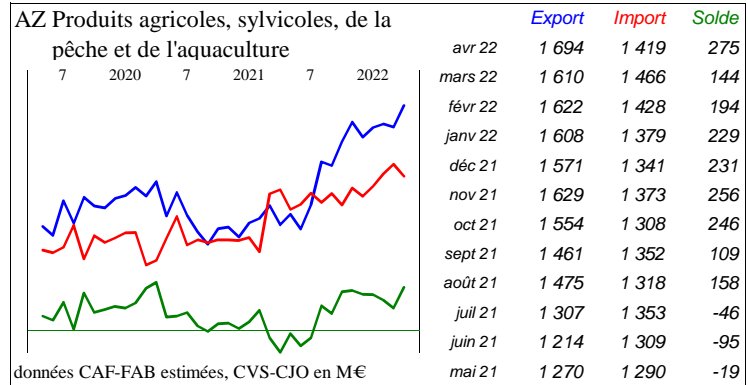
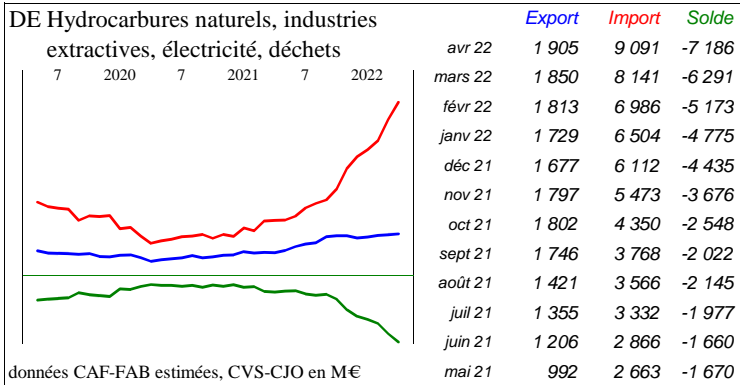
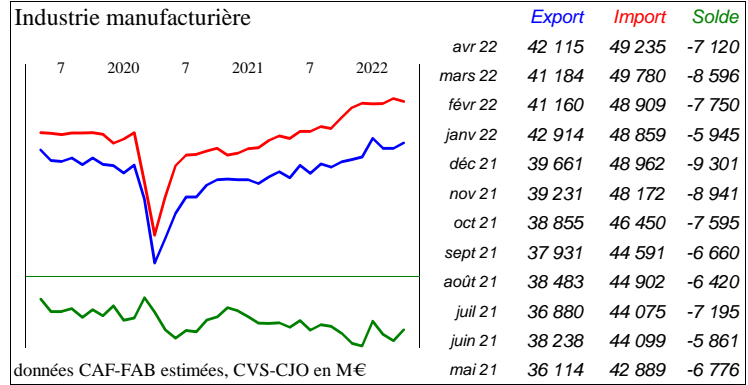
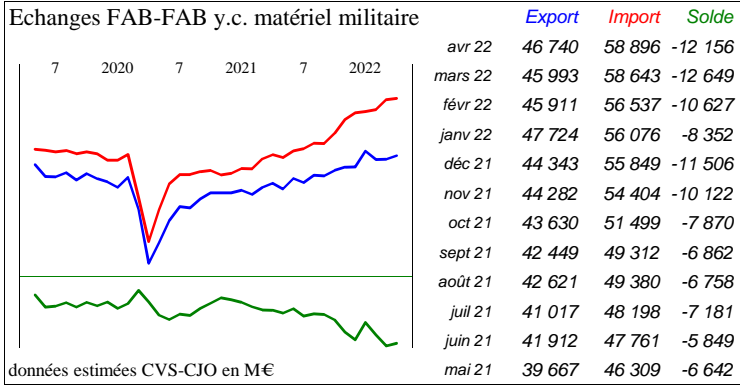
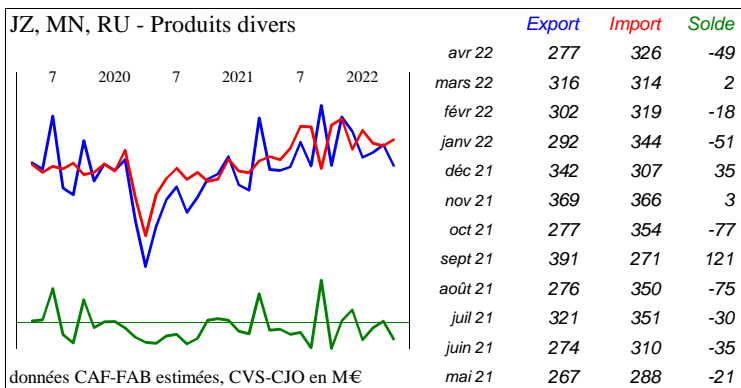
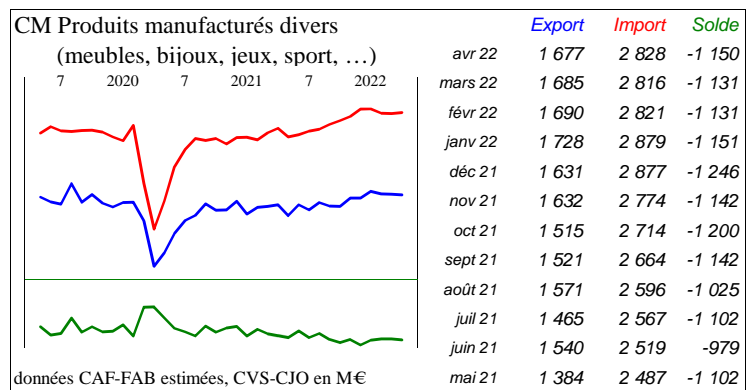
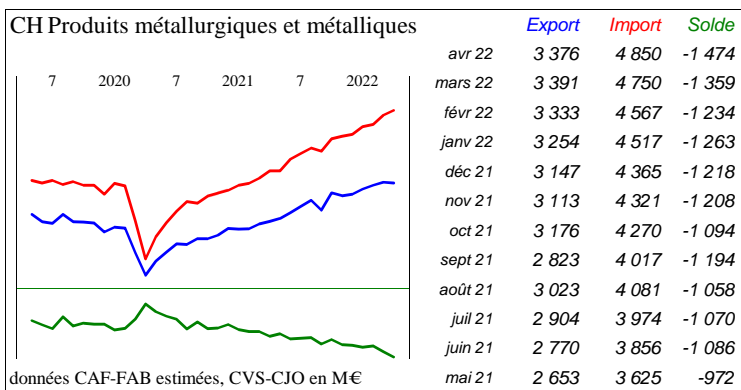
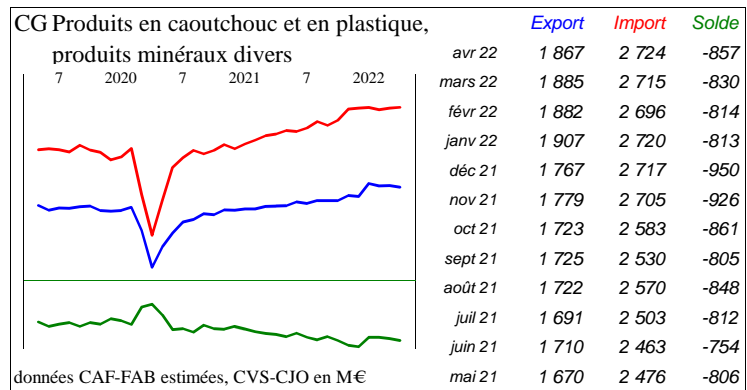
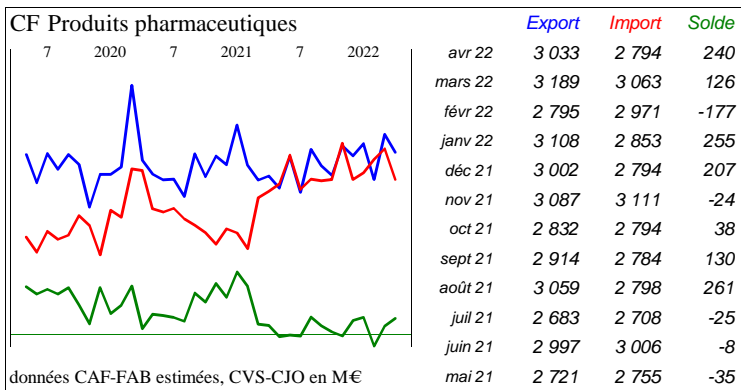
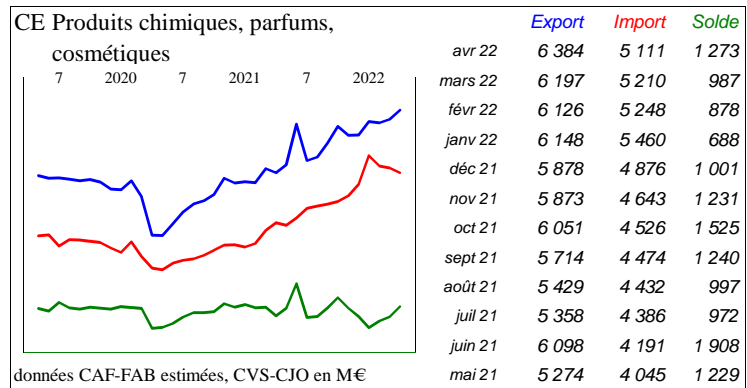
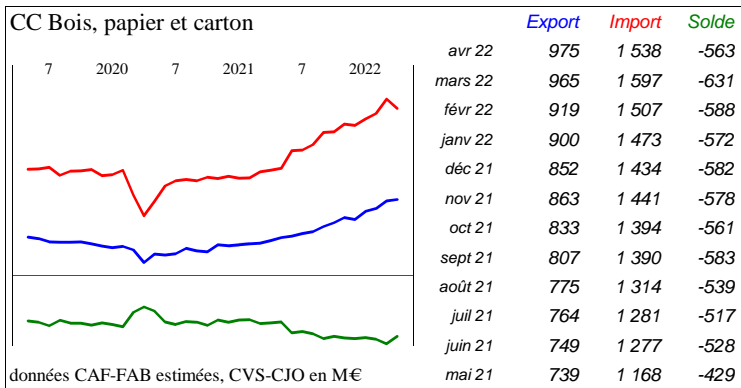
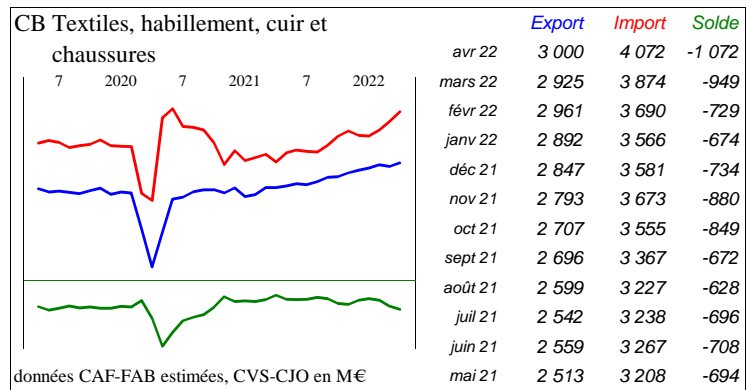
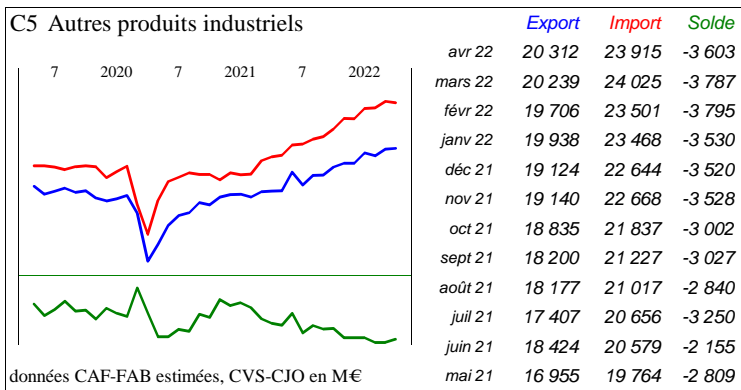


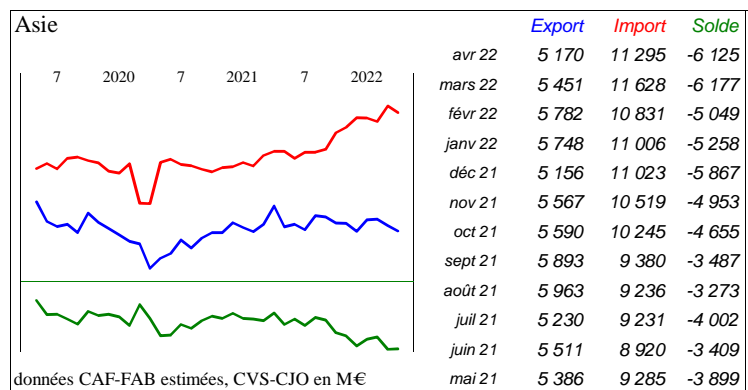
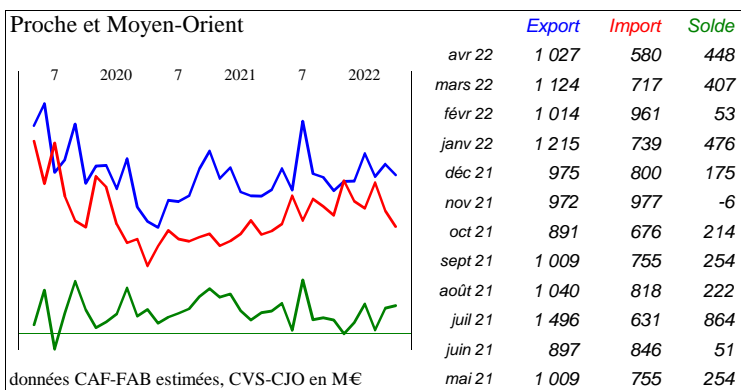
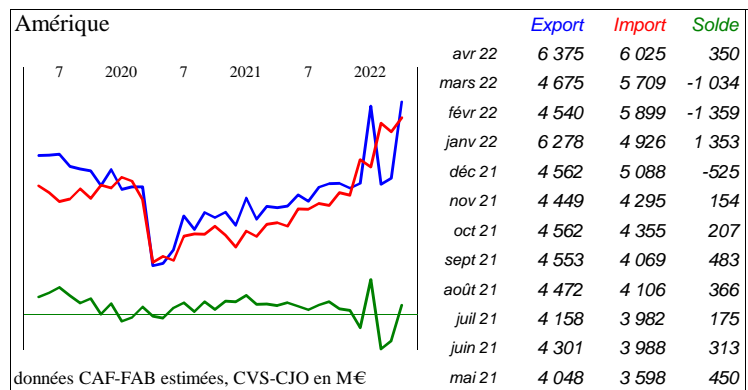
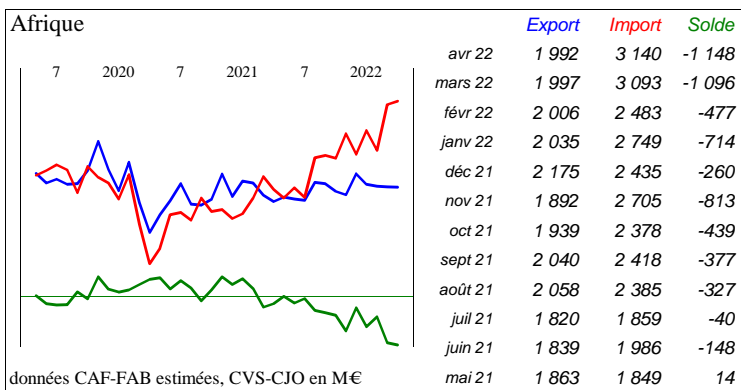
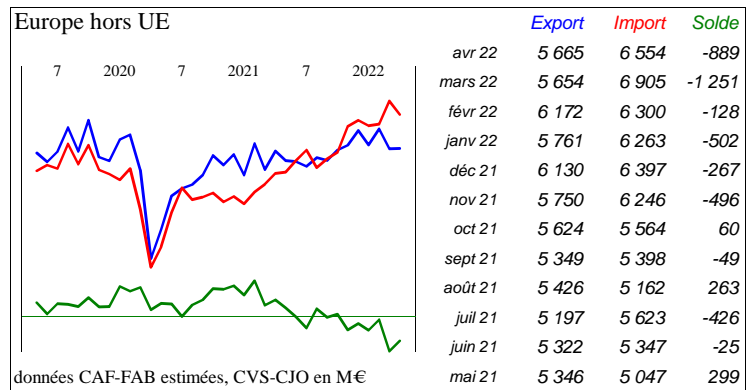
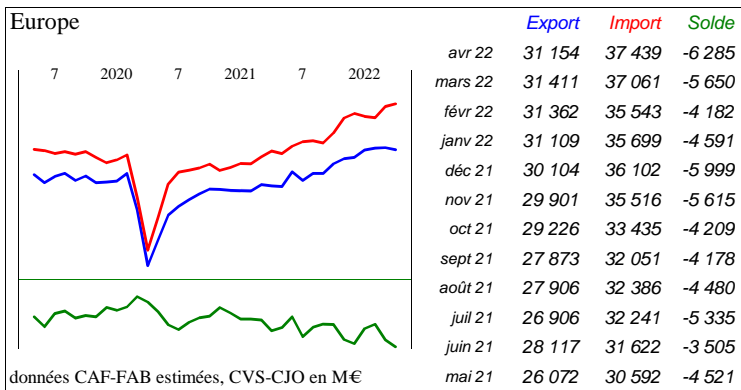
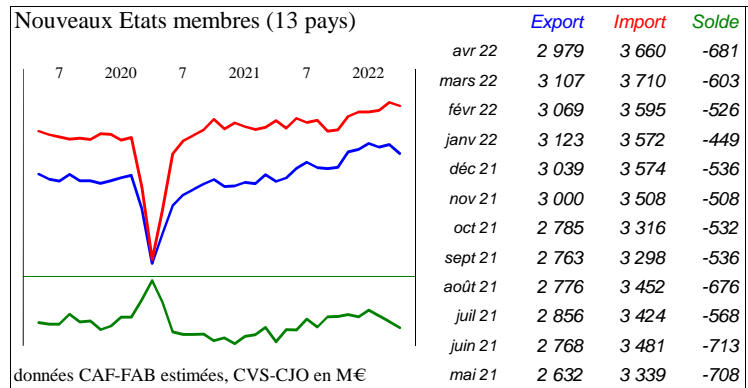
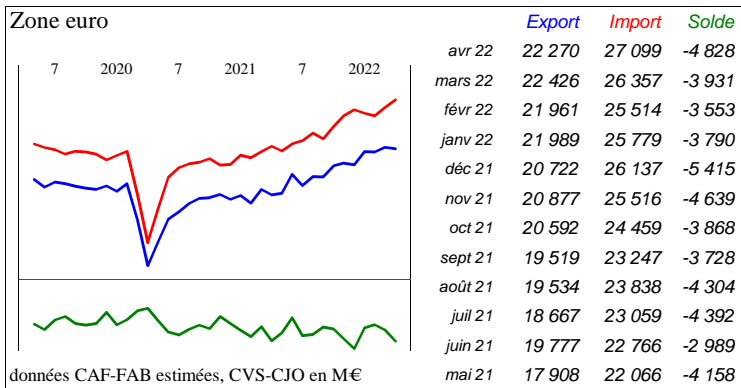
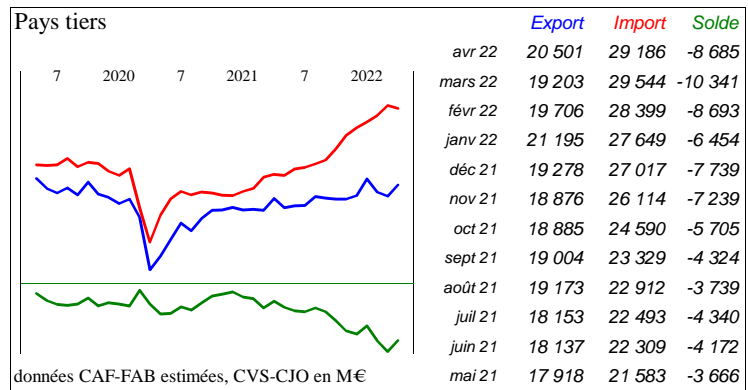
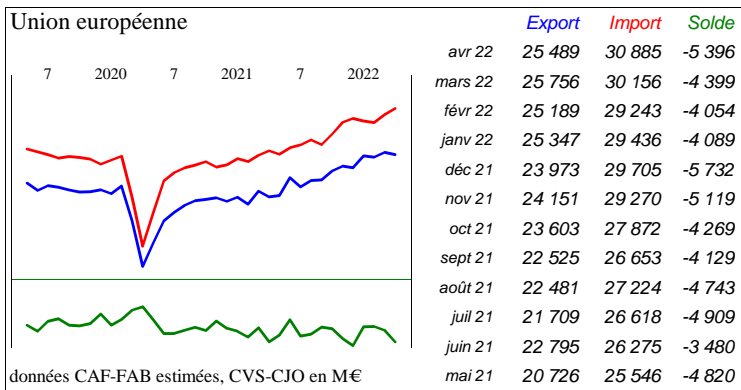


Avril 2022

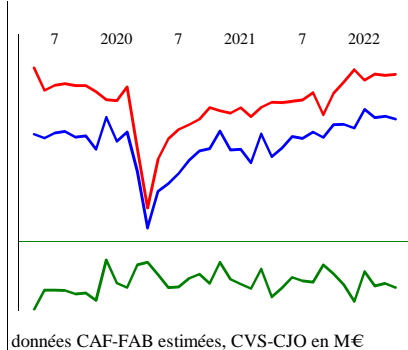
<http://lekiosque.finances.gouv.fr>



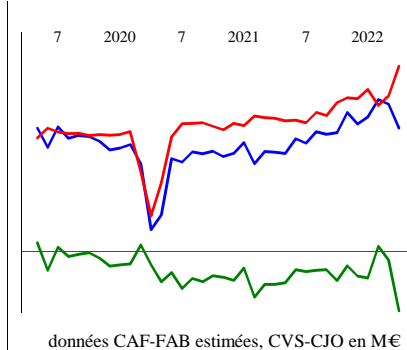




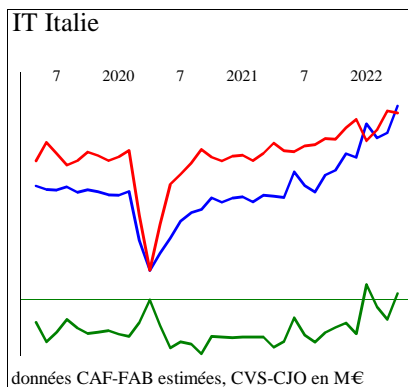
Source : Douanes françaises



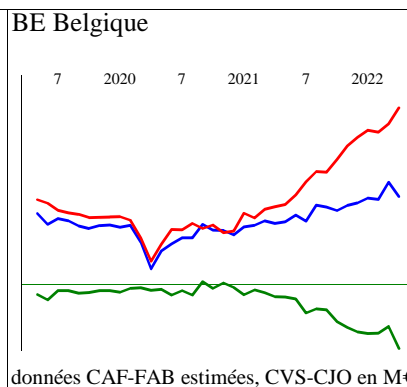
	Export	Import	Solde
avr 22	6 226	7 385	-1 159
mars 22	6 300	7 356	-1 056
févr 22	6 272	7 395	-1 123
janv 22	6 482	7 237	-755
déc 21	5 996	7 511	-1 515
nov 21	6 096	7 183	-1 086
oct 21	6 089	6 901	-811
sept 21	5 758	6 340	-582
août 21	5 894	6 916	-1 022
juil 21	5 735	6 724	-990
juin 21	5 782	6 688	-905
mai 21	5 481	6 656	-1 174



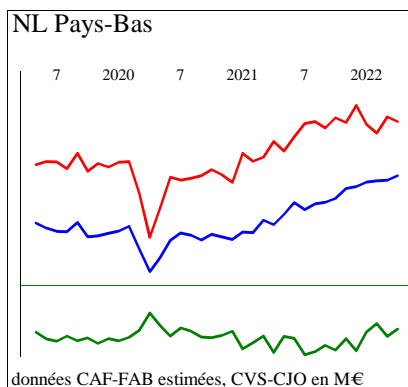
	Export	Import	Solde
avr 22	3 241	4 345	-1 104
mars 22	3 667	3 817	-150
févr 22	3 751	3 646	105
janv 22	3 443	3 933	-490
déc 21	3 315	3 765	-451
nov 21	3 522	3 780	-258
oct 21	3 164	3 697	-533
sept 21	3 134	3 464	-331
août 21	3 180	3 520	-340
juil 21	2 975	3 342	-367
juin 21	3 053	3 387	-333
mai 21	2 795	3 374	-578



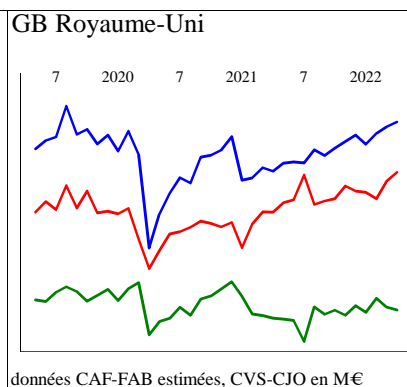
	Export	Import	Solde
avr 22	4 422	4 317	105
mars 22	4 008	4 347	-339
févr 22	3 931	4 055	-124
janv 22	4 148	3 888	260
déc 21	3 630	4 214	-584
nov 21	3 690	4 088	-398
oct 21	3 435	3 911	-476
sept 21	3 359	3 923	-564
août 21	3 103	3 830	-727
juil 21	3 202	3 807	-605
juin 21	3 411	3 721	-311
mai 21	3 019	3 733	-714



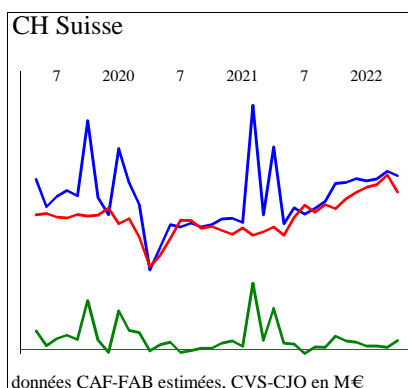
	Export	Import	Solde
avr 22	3 509	5 534	-2 025
mars 22	3 839	5 167	-1 328
févr 22	3 445	4 982	-1 537
janv 22	3 478	5 024	-1 546
déc 21	3 365	4 861	-1 496
nov 21	3 309	4 665	-1 356
oct 21	3 188	4 361	-1 172
sept 21	3 273	4 066	-794
août 21	3 312	4 082	-770
juil 21	2 950	3 848	-898
juin 21	3 089	3 546	-456
mai 21	2 932	3 327	-395



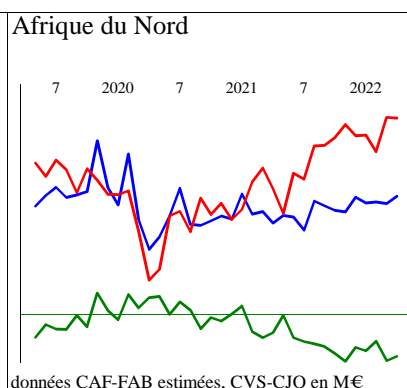
	Export	Import	Solde
avr 22	1 970	2 492	-523
mars 22	1 926	2 538	-612
févr 22	1 921	2 382	-461
janv 22	1 907	2 466	-559
déc 21	1 865	2 651	-785
nov 21	1 845	2 485	-640
oct 21	1 751	2 530	-779
sept 21	1 711	2 432	-721
août 21	1 698	2 494	-796
juil 21	1 641	2 474	-833
juin 21	1 708	2 344	-636
mai 21	1 595	2 209	-614



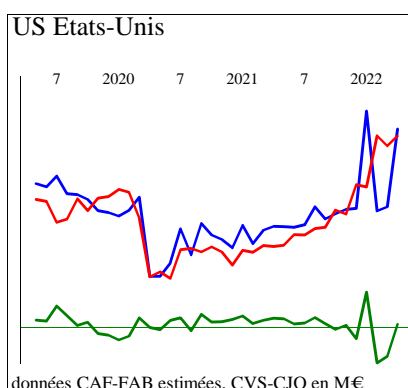
	Export	Import	Solde
avr 22	2 919	2 225	694
mars 22	2 850	2 104	746
févr 22	2 760	1 862	899
janv 22	2 611	1 951	660
déc 21	2 738	1 969	769
nov 21	2 649	2 040	609
oct 21	2 559	1 862	697
sept 21	2 456	1 830	626
août 21	2 534	1 784	749
juil 21	2 353	2 186	167
juin 21	2 367	1 845	523
mai 21	2 349	1 807	542



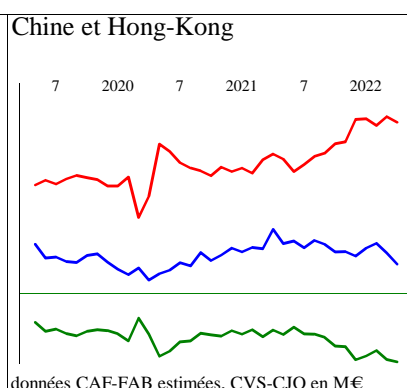
	Export	Import	Solde
avr 22	1 565	1 425	141
mars 22	1 603	1 571	32
févr 22	1 539	1 489	50
janv 22	1 520	1 467	53
déc 21	1 540	1 423	117
nov 21	1 507	1 367	140
oct 21	1 499	1 281	217
sept 21	1 347	1 319	28
août 21	1 285	1 251	34
juil 21	1 237	1 313	-76
juin 21	1 292	1 208	84
mai 21	1 153	1 055	97



	Export	Import	Solde
avr 22	1 234	1 814	-580
mars 22	1 179	1 821	-642
févr 22	1 190	1 565	-375
janv 22	1 183	1 689	-506
déc 21	1 226	1 684	-458
nov 21	1 117	1 768	-651
oct 21	1 128	1 669	-542
sept 21	1 161	1 612	-450
août 21	1 198	1 607	-409
juil 21	979	1 359	-380
juin 21	1 079	1 404	-325
mai 21	1 090	1 104	-14



	Export	Import	Solde
avr 22	4 743	4 613	130
mars 22	3 288	4 430	-1 142
févr 22	3 207	4 620	-1 413
janv 22	5 083	3 660	1 423
déc 21	3 253	3 700	-447
nov 21	3 240	3 145	95
oct 21	3 152	3 228	-76
sept 21	3 058	2 902	155
août 21	3 284	2 875	409
juil 21	2 948	2 757	191
juin 21	2 901	2 760	141
mai 21	2 914	2 562	352



	Export	Import	Solde
avr 22	1 918	6 369	-4 451
mars 22	2 263	6 552	-4 288
févr 22	2 572	6 268	-3 697
janv 22	2 417	6 486	-4 070
déc 21	2 161	6 468	-4 307
nov 21	2 304	5 764	-3 460
oct 21	2 299	5 700	-3 401
sept 21	2 537	5 392	-2 855
août 21	2 662	5 298	-2 636
juil 21	2 424	5 043	-2 619
juin 21	2 640	4 825	-2 186
mai 21	2 554	5 213	-2 660